

# Nature Trail Activities

## Ranger Rik's Adventure



Join Ranger Rik on his  
adventure and see what  
you can score completing  
his challenges!



Ranger Name:

YOUR Name

Total point: (Challenge 01+02+03+04)

YOUR POINT pt / 35 pt

- 30 points or above: **RARE**  
**Bullfinch**
- 25 points or above: **UNCOMMON**  
**Woodpecker**
- 20 points or above: **COMMON**  
**Robin**



## Rik's Nature Quiz

How well do you know about Yeovil Country Park? Take Rik's quiz and see what you score!

Challenge 01:

**YOUR POINT** pt / 17 pt

♀. **1** **Name this bird**

Can you name a bird with red all over its breast?

pt

1 pt



♀. **4** **Name a minibeast**

Can you name a minibeast that you might find living under a log?

pt

1 pt

♀. **5** **Name of a baby swan**

What is the correct name for a 'baby swan'?

pt

1 pt

♀. **7** **Name that tree**

Which tree in Ninesprings might be particularly Christmassy with its red berries in winter?

pt


1 pt

♀. **8** **Name of a female fox**

Do you know what a female fox is called?

pt

1 pt



♀. **9** **Name that flower**

Can you name a yellow flower that grows in Ninesprings?

pt

1 pt

Q. 2

### Name the insect

What large insects might you see flying above the lake in the summer?

1 pt



1 pt

Q. 3

### Name this fluffy beast

What is small and grey with a fluffy tail that lives in the trees?

1 pt



1 pt

Q. 6

### Name 5 different trees

Can you name 5 different trees you would find in Ninesprings?

5 pt



a \_\_\_\_\_

b \_\_\_\_\_

c \_\_\_\_\_

d \_\_\_\_\_

e \_\_\_\_\_

5 pt

### Name a low flower

Can you name a low flower that you could see in Ninesprings?



1 pt

Q. 10

### Name 4 wild mammals

Can you name 4 wild mammals that you will find in these different habitats at Ninesprings:

4 pt

a \_\_\_\_\_

River

b \_\_\_\_\_

Meadows

c \_\_\_\_\_

Woodland

d \_\_\_\_\_

Hedgerow

4 pt

05

### Log storage area at the path junction



Look at the large tree on the bank – what is the name of the nuts that grow on this tree?

pt

06

### Large conifer



Look up into the tree. What animal lives in a man made home like this?

pt

07

### Waterfalls along the valley



How many waterfalls can you count on your way to the lake?

pt

1 pt

1 pt

1 pt

END

10

### Mallard ducks in the lake



Can you name two main differences between male and female mallard ducks?

pt

09

### The hollow tree



What is the name of the hollow tree?

pt

08

### Small humpback bridge



Which striking bird might you see flying across the pond?

pt

1 pt

1 pt

1 pt

Clue: it's a type of citrus fruit

Clue: It catches fish to eat!

05

### Log storage area at the path junction



Look at the large tree on the bank – what is the name of the nuts that grow on this tree?

pt

06

### Large conifer



Look up into the tree. What animal lives in a man made home like this?

pt

07

### Waterfalls along the valley



How many waterfalls can you count on your way to the lake?

pt

1 pt

1 pt

1 pt

END

10

### Mallard ducks in the lake



Can you name two main differences between male and female mallard ducks?

pt

09

### The hollow tree



What is the name of the hollow tree?

pt

08

### Small humpback bridge



Which striking bird might you see flying across the pond?

pt

1 pt

1 pt

1 pt

Clue: it's a type of citrus fruit

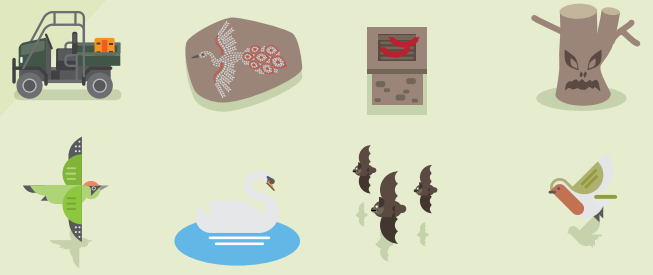
Clue: It catches fish to eat!



Challenge 02:  
**YOUR POINT** pt / 2 pt

## Where is...

Can you find where these appear  
in the park on the map above?



**Well done!**

You have completed the Trail!  
You can always head back to  
the Ninespring cafe to have  
a drink and re-charge for  
the next challenge.

Challenge 03:  
**YOUR POINT** pt / 11 pt

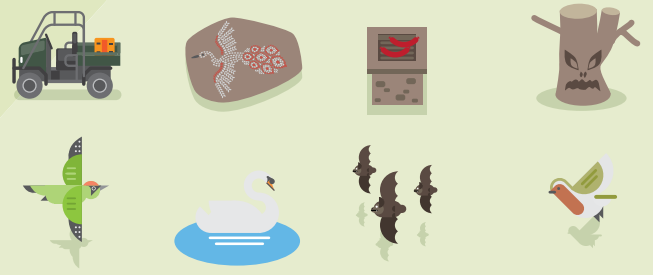




Challenge 02:  
**YOUR POINT** pt / 2 pt

## Where is...

Can you find where these appear  
in the park on the map above?



**Well done!**

You have completed the Trail!  
You can always head back to  
the Ninespring cafe to have  
a drink and re-charge for  
the next challenge.

Challenge 03:  
**YOUR POINT** pt / 11 pt



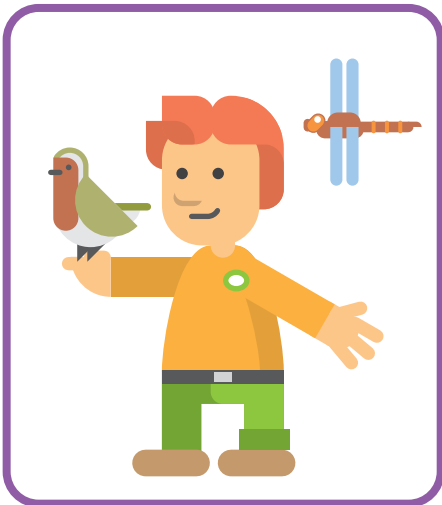
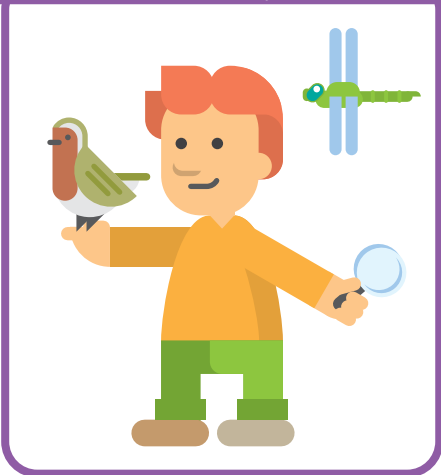
# Spot the different

There are 10 differences, can you spot all of them? You will score half a point for each one.

Challenge 04:

YOUR POINT pt / 5 pt

Answers: 1. Dragonfly 2. Rik's hair 3. Rik's ear 4. Robin's wing 5. Shirt collar 6. Shirt badge 7. Magnifying glass 8. Belt 9. Trousers leg 10. Shoes colour



## Visit us



Goldenstones Car Park  
BA20 1QZ

## Further information

Follow us on social media for up to date information and photos:



Yeovil Country Park

If you would like more information about the country park, Ninesprings Café, our events & activities, the volunteers or Friends group please contact us:

**W:** [www.yeovilcountrypark.co.uk](http://www.yeovilcountrypark.co.uk)

**T:** 01935 382424

**E:** [Parks@yeovil.gov.uk](mailto:Parks@yeovil.gov.uk)

**A:** Ninesprings Café,  
Brunswick Street,  
Yeovil, Somerset,  
BA20 1QZ

**A:** Yeovil Town Council,  
The Town House,  
19 Union Street,  
Yeovil, Somerset,  
BA20 1PQ

